



# GMT MONTHLY MEMBERSHIP PROGRESS REPORT

Results as of: 3/31/2017

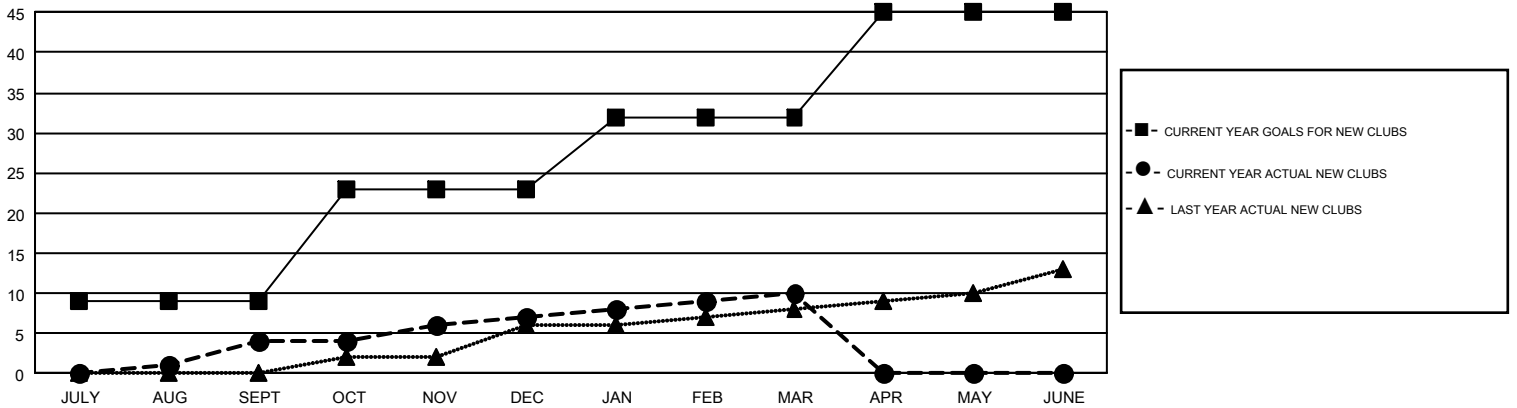
## GMT Constitutional Area 1, Group C

GMT: THOMAS MATNEY

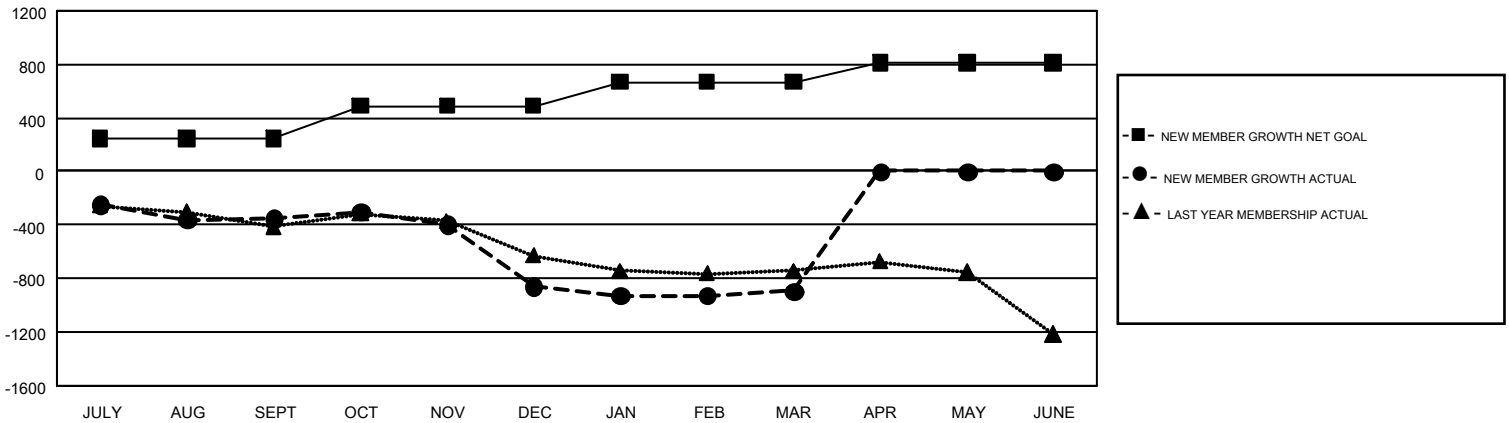
REPORT DOES NOT INCLUDE CLUBS IN UNDISTRICTED AREAS.

Clubs				Members			
RESULTS FOR 2016-2017				RESULTS FOR 2016-2017			
QUARTER	NEW CLUB GOAL	NEW CLUBS	DROPPED CLUBS	QUARTER	NEW MEMBER GROWTH NET GOAL (not reinstated or transfers)	NEW MEMBER GROWTH ACTUAL (not reinstated or transfers)	DROPPED MEMBERS ACTUAL (including transfers)
JULY/AUG/SEPT	9	4	6	JULY/AUG/SEPT	248	895	1,244
OCT/NOV/DEC	14	3	11	OCT/NOV/DEC	241	839	1,350
JAN/FEB/MAR	9	3	4	JAN/FEB/MAR	180	1,016	1,048
APR/MAY/JUNE	13	0	0	APR/MAY/JUNE	142	0	0

GOALS AND ACTUAL NEW CLUBS CUMULATIVE



GOALS AND ACTUAL MEMBERS CUMULATIVE



DROPPED CLUBS: 21	843 CLUBS OF 1,540 ADDED 1 OR MORE NEW MEMBERS	<b>GENDER DISTRIBUTION</b>
<b>DROPPED MEMBERS</b>		MALE            30,693 (73.23%)
DECEASED            513		FEMALE         11,222 (26.77%)
CLUB CANCELLED     143	<a href="#">CLICK HERE FOR CUMULATIVE MEMBERSHIP DATA</a>	TOTAL FAMILY UNIT MEMBERS            7,716
OTHER                    2,986		FAMILY MEMBERS PAYING HALF DUES     3,955
<b>TOTAL                    3,642</b>		